

*iTak International ( Shenzhen ) Limited*

高島愛托貿易（深圳）有限公司

会社案内 Company Profile

Aug 2019



# *iTak International ( Shenzhen ) Limited*

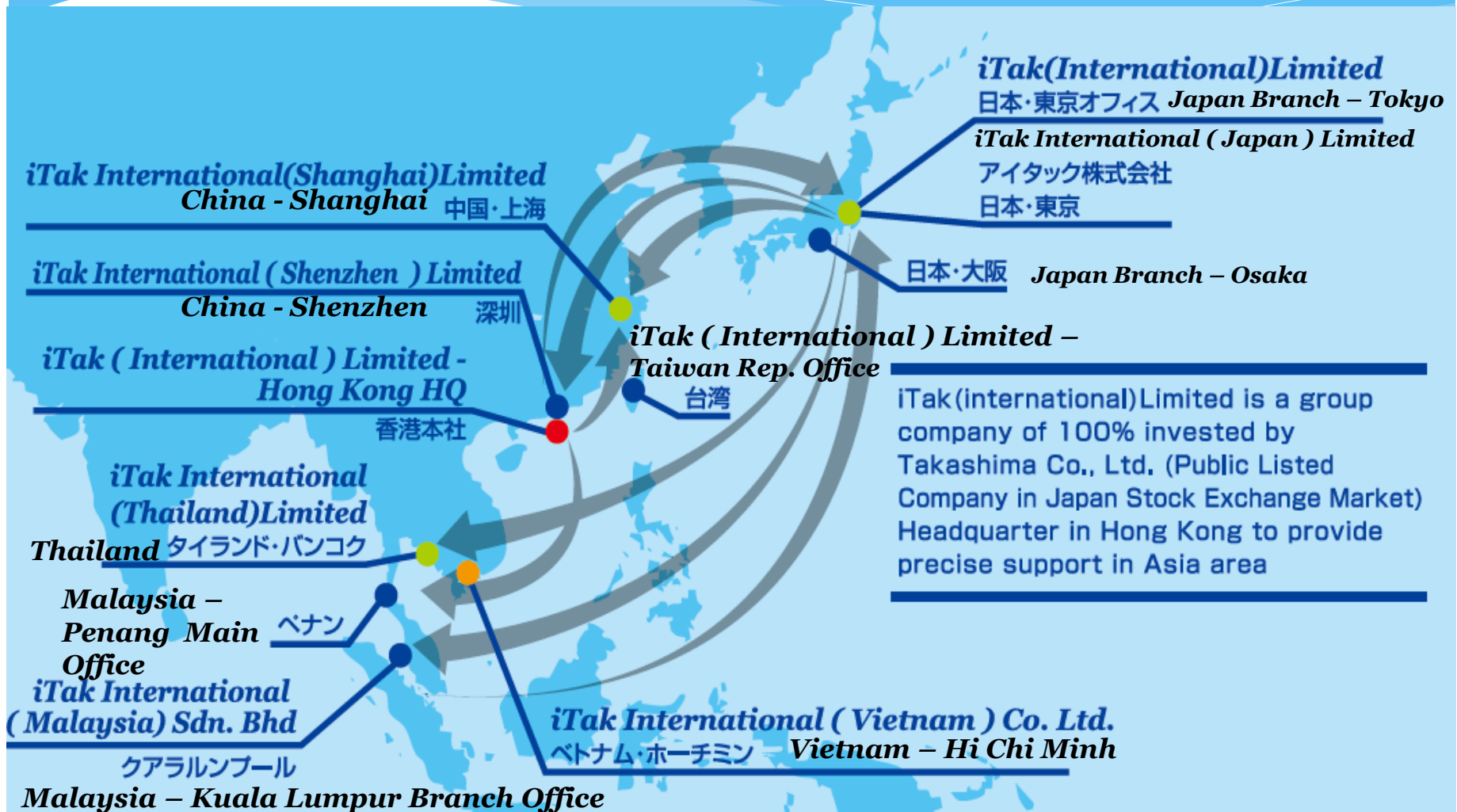
Address :

Room 2003A, 20/F, Development Centre Bldg.,  
2010, Renmin South Road,  
Shenzhen,  
China.

住所：中国深圳市人民南路2010号  
發展中心20樓2003A室



# iTak Group - Global Network



# *iTak International ( Shenzhen ) Limited*

## 会社概要 ( Company Introduction )

会社名 ( Company Name ) : ***iTak International ( Shenzhen ) Limited***

( Former: iTak Technolgoy ( Shenzhen ) Limited – Jan 18<sup>th</sup> 2010 )

( Former : TAK ( Hong Kong ) Limited – Rep Office – since Y2005 )

設立 ( Set Up ) : 2012年2月21日

資本金 ( Capital ) : RMB1,000,000- ( RMB One Million )

取引銀行 ( Main Bank ) : Mizuho Corporate Bank, Shenzhen

Holding Company : ***iTak ( International ) Limited***

所在地 ( Place ) : Room 2613, 26/F, North Tower, Concordia Plaza,  
1 Scicence Museum Road, TST East, Kowloon,  
Hong Kong.

Tel: (852)2782-6661

[Http://www.itak.co.jp](http://www.itak.co.jp)

資本金 ( Capital ) : HK\$100,000,000- ( HK\$ 100 Million )

親会社 ( Mother Company ) : 高島株式会社 Takashima & Co., Ltd.

東証一部上場 ( Public Listed Company in Japan )

[Http://www.tak.co.jp](http://www.tak.co.jp)

# *iTak International ( Shenzhen ) Limited*

## 中国連絡拠点 ( iTak @ China Partners Factory )

*iTakSZ - China*

中国深圳

*iTak @ XG Mic & Speaker Factory - Shangdong*

中国山東

*iTak @ Truly LCD Factory - Shanwei*

中国汕尾

*iTak @ LCD Factory ( GV - Anhui)*

中国安徽

*iTak @ LCD Factory ( JS - Hunan)*

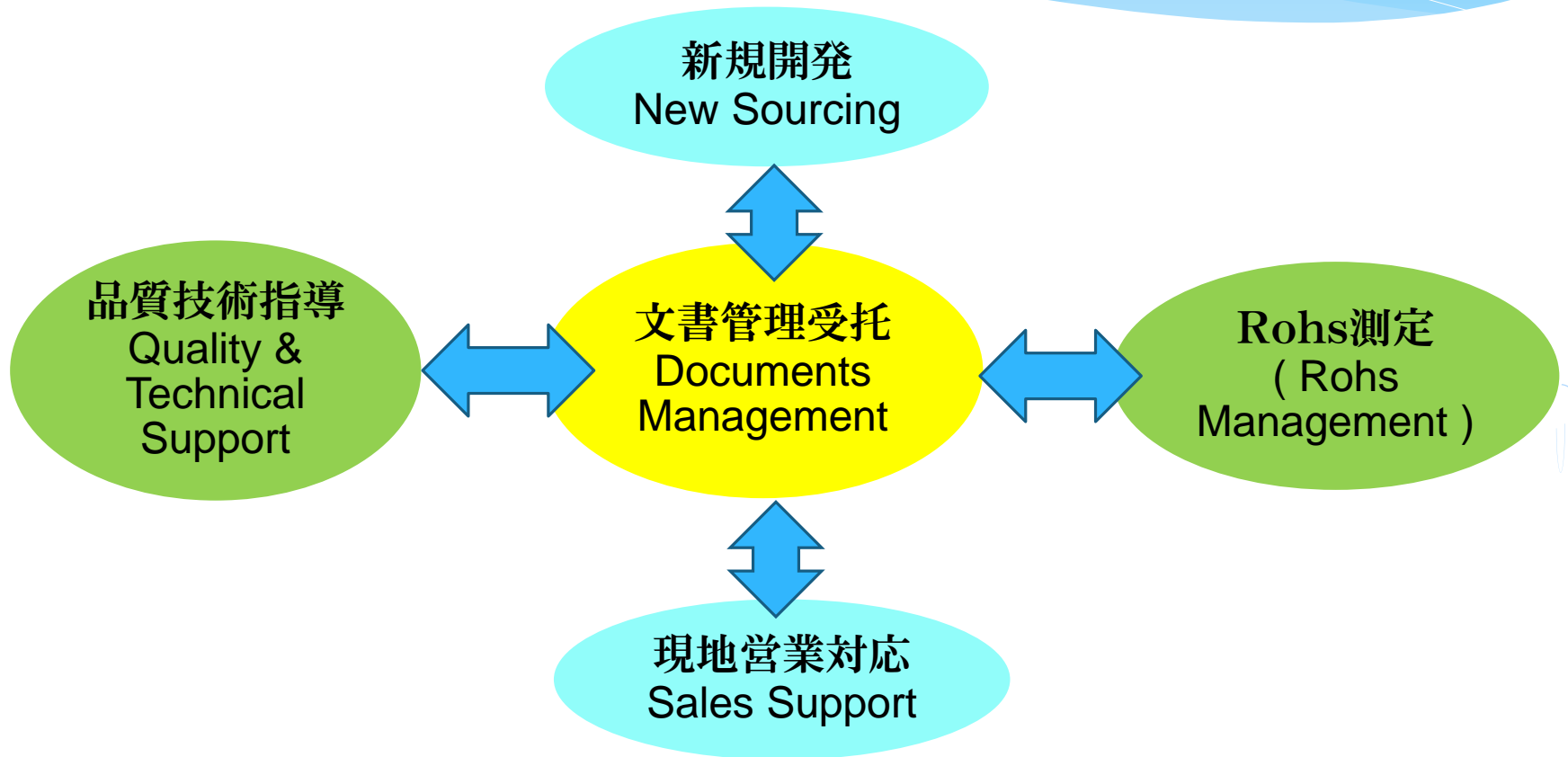
中国湖南

*iTak @ Assembly Factory ( Dongguan)*

中国東莞

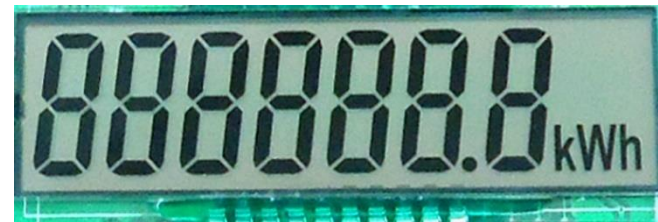
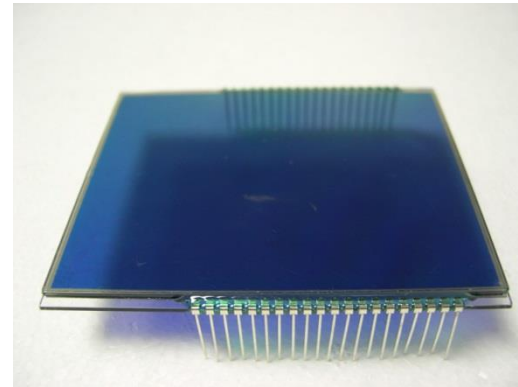
# *iTak International ( Shenzhen ) Limited*

## 事業分野 (Business Field – Support Holding Co )



# *iTak International ( Shenzhen ) Limited*

## **LCD 技術指導體制 ( LCD - Technical Support )**



*iTak International ( Shenzhen ) Limited*

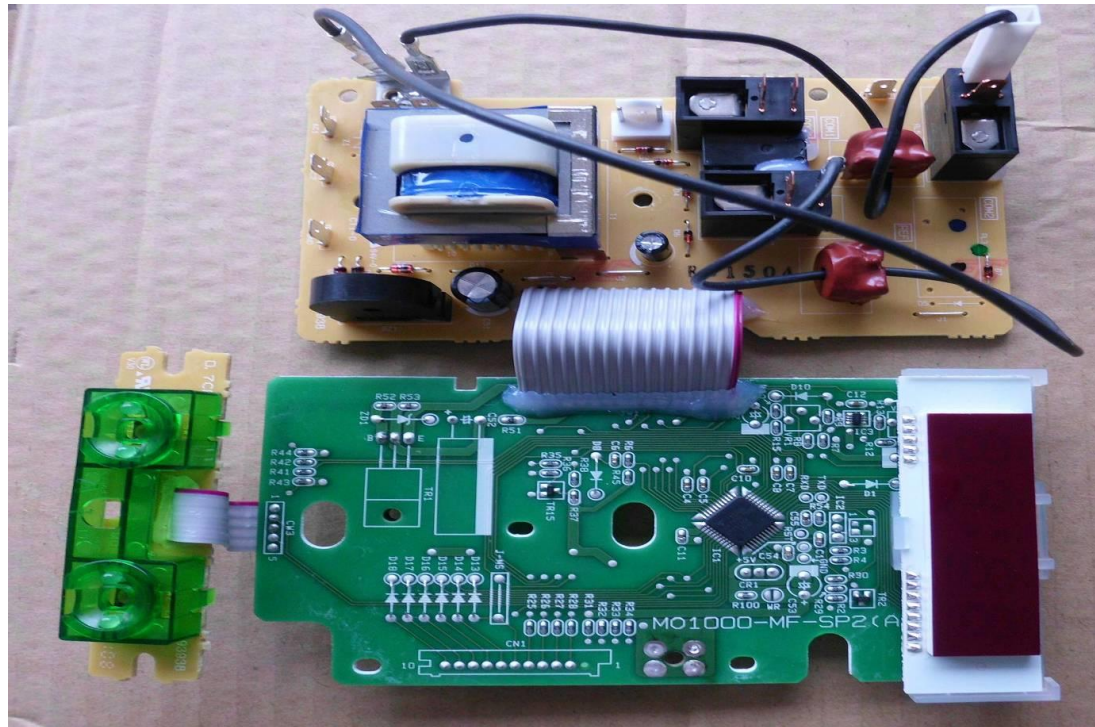
**Mic & Speaker 技術指導**  
**( Mic & Speaker - Technical support )**





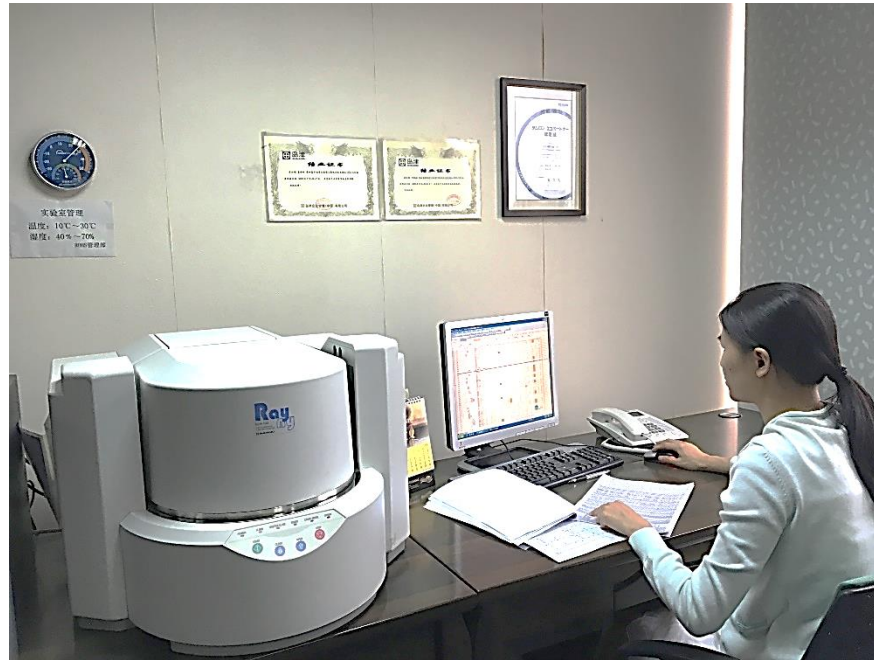
# *iTak International ( Shenzhen ) Limited*

## 基板組立 - 技術指導 PCB Assembly - Technical support



# *iTak International ( Shenzhen ) Limited*

## **Rohs 測定体制 - Rohs management**



# *iTak International ( Shenzhen ) Limited*



私達の道は私達の手で切り開く - Carve one's own path